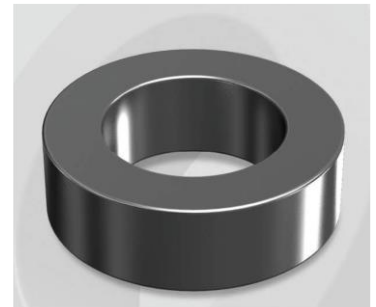


# CK330090G

OD : 330

## Electrical Characteristics

Material	Permeability ( $\mu$ )	AL $\pm$ 8% (nH/N <sup>2</sup> )	DCB (% min) @ 60 Oe	Coreloss (mW/cm <sup>2</sup> , max) @50kHz, 1000G
Mega Flux	90	91	55.2	710



## Core Dimensions

Dimensions		Uncoated		Coated		Color	Packaging
		(mm)	(inch)	(mm)	(inch)		
OD	(Max)	33.02	1.300	33.83	1.332	Black	Box Qty = 240 pcs
ID	(min)	19.94	0.785	19.30	0.760		
HT	(max)	10.67	0.420	11.61	0.457		

## Physical Characteristics

Cross Section (A)	Path Length ( $l$ )	Window Area (W <sub>a</sub> )	Volume (V)	Breakdown Voltage (Vac)
0.672 cm <sup>2</sup>	8.15 cm	2.93 cm <sup>2</sup>	5.4768 cm <sup>3</sup>	1,000
0.1042 in <sup>2</sup>	3.21 in	578,251 cmil	0.334 in <sup>3</sup>	

## Winding Information

0% Winding length/turn (cm)		
3.775		
40% winding factor Surface Area (cm <sup>2</sup> )		
49.01		
40% Wound Di.(mm)		
OD	ID	HT
38.69	12.64	17.37

## Typical DC Bias Performance

